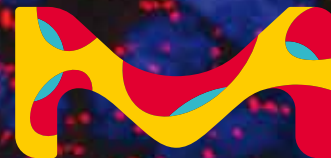


**Sigma-Aldrich**<sup>®</sup>  
Lab Materials & Supplies



# ALL SYSTEMS GO

**The first stage of discovery is  
a highly characterized antibody.**

Where others finished, you begin. For your research, count on over 90,000 highly characterized antibodies, extensively published results and unmatched expertise from many of the brands you know: Prestige Antibodies<sup>®</sup>, Chemicon<sup>®</sup>, Calbiochem<sup>®</sup>, Upstate<sup>®</sup> and Millipore<sup>®</sup>.

**Find It First**

[www.sigmaaldrich.com/antibodyexplorer](http://www.sigmaaldrich.com/antibodyexplorer)

The life science business of Merck operates as MilliporeSigma in the U.S. and Canada.

**MERCK**